



# THE SMYTH

~3,800 sqft | 4 bedrooms | 3.5 baths | Bonus | Office | En suite

\*PHOTO SIMILAR



\*PHOTO SIMILAR




\*PHOTO SIMILAR

## ALTURAS HOMES

### PLAN DETAILS

- 3-car garage
- Two-Story
- Main floor master suite
- Office
- Bonus room
- En suite bedroom
- Plumbed for central vac
- Beamed ceilings
- Covered patio deck

See the available Smyth homes  
and floor plan selection details on  
[www.alturashomes.com](http://www.alturashomes.com)

See more photos on *Instagram*  
 @alturashomes

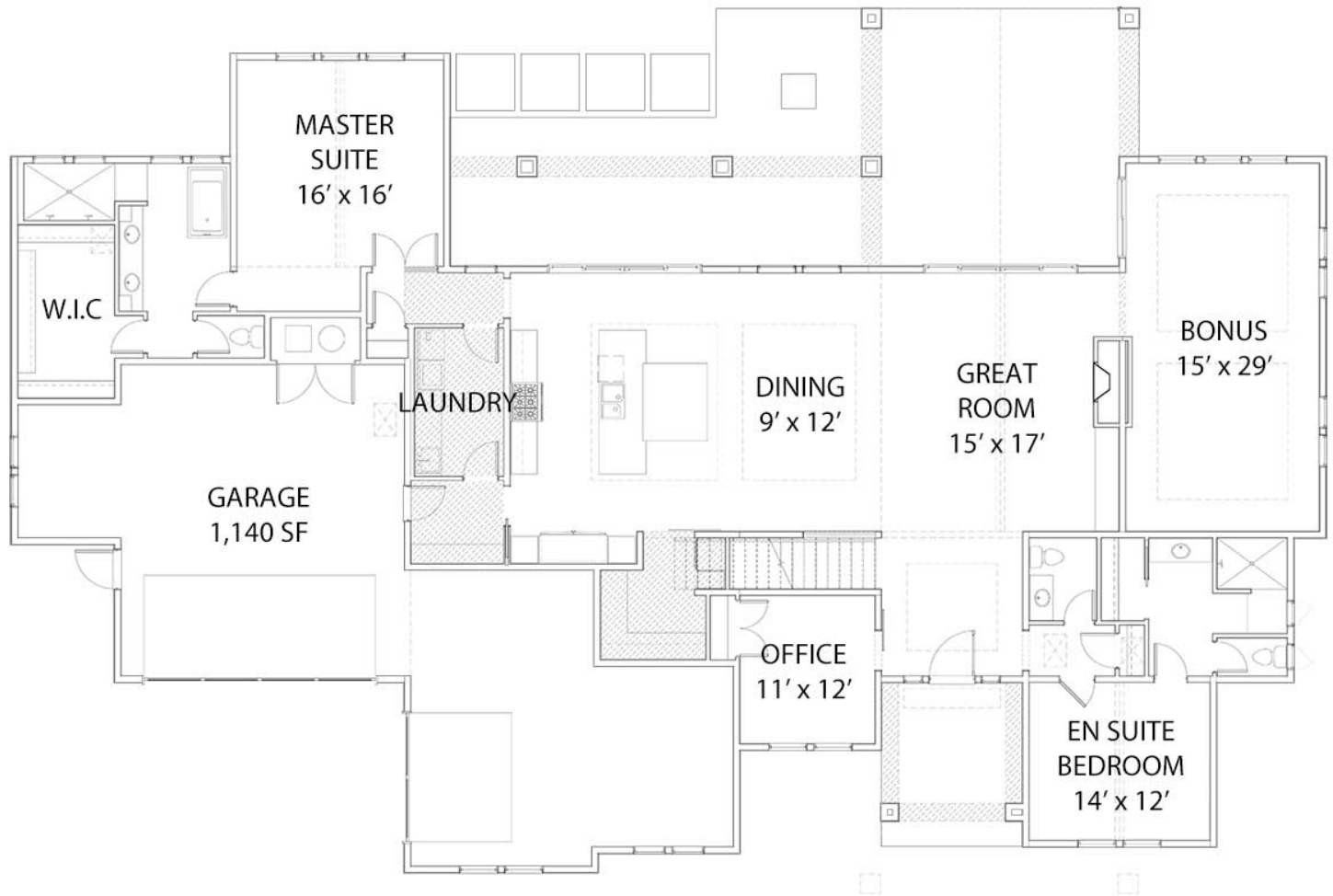
Learn more about this floor plan at  
[alturashomes.com/floor-plans/smyth/](http://alturashomes.com/floor-plans/smyth/)

# THE SMYTH

~3,800 sqft | 4 bedrooms | 3.5 baths | Bonus | Office | En suite

ALTURAS  
HOMES

## MAIN LEVEL



Flooring may change between communities.

UPDATED ON: SEPTEMBER 15, 2020



Prices, features, specifications, availability, flooring design, and other related information is subject to change without notice. Price is subject to change anytime. Flooring indicated is subject to change. For each floor plan, buyer to verify all details with a listing agent.

# THE SMYTH

~3,800 sqft | 4 bedrooms | 3.5 baths | Bonus | Office | En suite

ALTURAS  
HOMES

## UPPER LEVEL



Flooring may change between communities.

UPDATED ON: SEPTEMBER 15, 2020



Prices, features, specifications, availability, flooring design, and other related information is subject to change without notice. Price is subject to change anytime. Flooring indicated is subject to change. For each floor plan, buyer to verify all details with a listing agent.